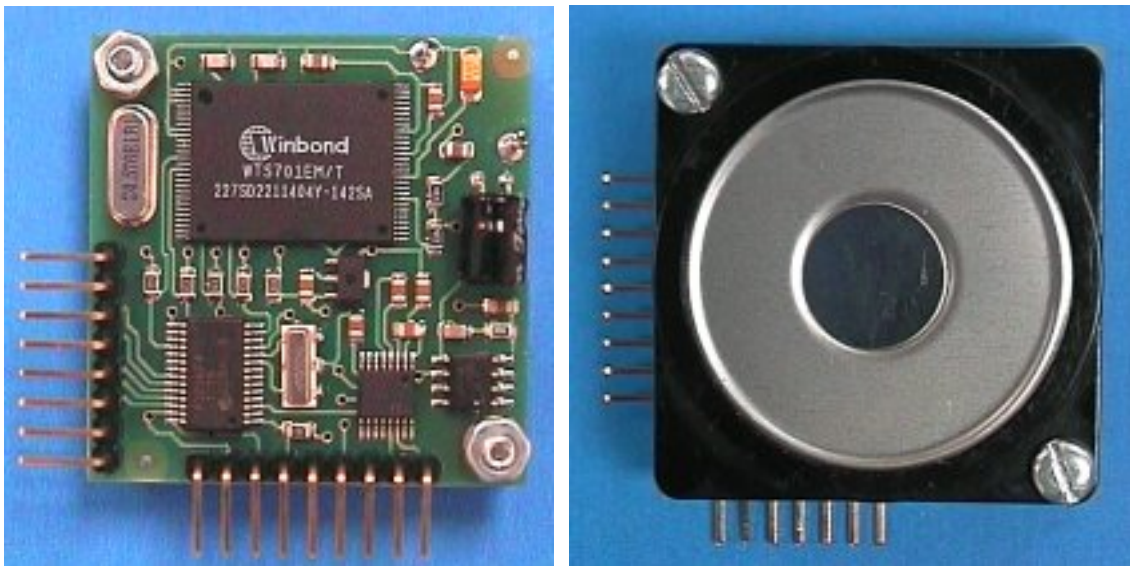


SP03 Text to Speech Synthesizer

Ein interessantes Sprachboard das Ascii-Texte direkt in Sprache umwandeln und aussprechen kann. Ideal für Roboter, da so quasi ein unbegrenztes Vokabular zur Verfügung steht ohne das aufwendige Sprachspeicher notwendig sind. Ein moderne Sprach Synthesizer von Winbond macht's möglich.

Das Board verfügt bereits über Verstärker und Lautsprecher. Die Ansteuerung erfolgt über I2C oder RS232 (echter PC-Pegel). Somit kann das Board nicht nur an Controllerboards (wie z.B. RN-Control, RNBFA usw.) sondern auch direkt an den PC angeschlossen werden.

Zahlreiche Beispielprogramme stehen zur Verfügung. Die Doku ist derzeit nur in englisch verfügbar.



SP03 Eigenschaften:

- 5 Volt Spannungsversorgung
- Strombedarf 35 mA Standby und ca 60-100mA bei Ausgabe der Sprache
- Sprachchip Synthesizer - Winbond WTS701EM/T
- RS232 interface für PC (38400 baud) oder Controller mit Max232
- I2C Schnittstelle für Controllerboards
- Steuerung wahlweise über 3 - 5 Eingabeports
- Fest speicherbare Sätze (30 Sätze mit mehr als 1925 Zeichen insgesamt)
- **Automatische Umwandlung von Text in Sprache – Unlimitiert per RS232 oder I2C**
- Eingebauter 40 mm Lautsprecher
- Eingebauter Verstärker - 325mW
- Kompakte Größe - 40mm x 40mm inkl. Stiftleisten

Der Synthesizer ist zwar vornehmlich für die Englische Sprache ausgelegt, jedoch können bei geschickter Anwendung der Buchstaben durchaus auch deutsche Sätze generiert werden.

Technik und Doku

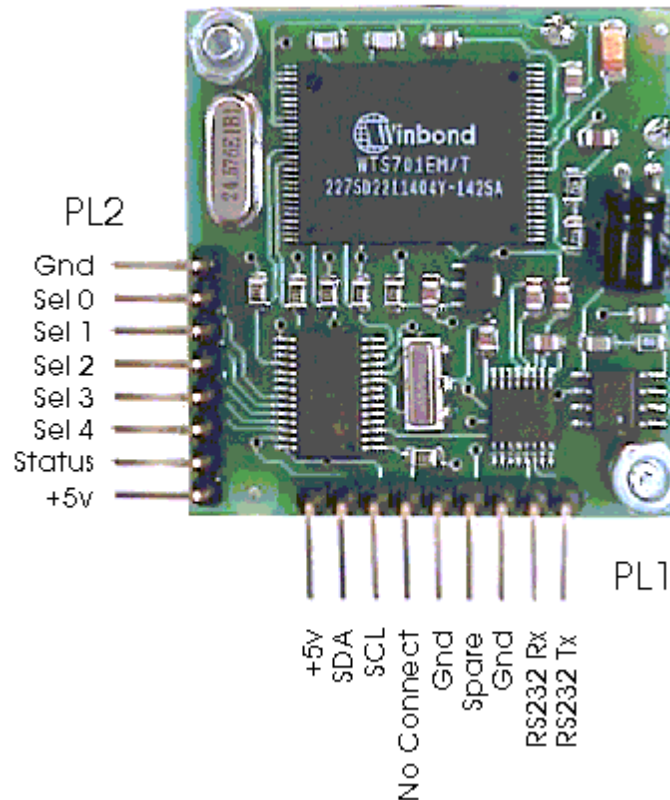
The robotics community has been without a low cost speech synthesizer chip for a long time. The ever popular SP0256-AL2 has long gone out of production, though there are a few still available. There are other multi-chip products around but none have captured the popular imagination like the Winbond WTS701. And with good reason, the WTS701 is not only a complete single chip synthesizer but also includes a text to speech processor. Given the near impossibility of producing a definitive set of rules for text to speech processing, the WTS701 performs impressively. The only downer for the hobbyist is that the WTS701 comes in a 56 lead TSOP package with pins on a 0.5mm pitch.

The SP03 module includes an audio amplifier, a 3volt regulator and level conversion to 5volts, a PIC processor to provide easy communication with your host processor and even a small 40mm speaker, along with the WTS701. Interfaces include an RS232 serial interface, I2C bus interface and a parallel interface to speak up to 30 predefined phrases. A PC program SP03.EXE is available to load the 30 predefined phrases into the SP03.

We have examples of using the speech module with popular processors.

Connections to the Speech Module

There are two connectors on the SP03 module. The 5v power supply may be applied to either of them - the other may be left unconnected.



PL1

+5V -5V Power Supply - up to 100mA

SDA -IC2 bus SDA connection

SCL -I2C bus SCL connection

No Connect -Do not connect this pin

GND -The 0 volt Ground line

Spare -Undefined pin - do not connect

GND -The 0 volt Ground line

RS232 Rx -Connect to Tx on the PC

RS232 Tx -Connect to Rx on the PC

PL2

+5V -5V Power Supply - up to 100mA

Status -High when speaking, Low when done

Sel 4 -These are the binary select

Sel 3 -inputs. They select one of the

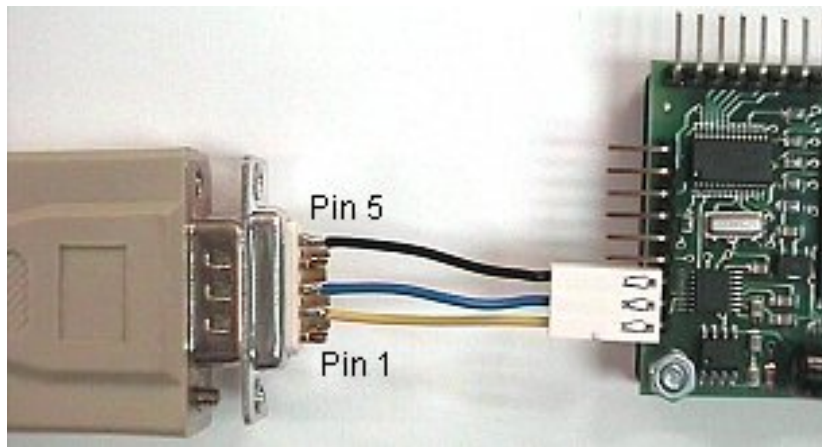
Sel 2 -30 predefined phrases

Sel 1 -

Sel 0 -

GND -The 0 volt Ground line

The serial data format is 8bits, No Parity, 2 stop bits, 38400 baud.



RS232 Commands

There are 32 serial commands that can be sent to the SP03. Thirty of these (commands 1 to 30, or 0x01 to 0x1E) are used to speak one of the thirty predefined phrases. To speak any of these phrases, just send a single command byte to the SP03. When the SP03 has finished speaking it will send the command back to the PC as an acknowledgement. Don't send any commands to the module whilst it is speaking, as they will be ignored. When the command is acknowledged, the module will be ready to receive another command.

Command 128 (0x80)

This command is used to speak a line of text. It is followed by 3 control bytes, then the ASCII text, then an 0x1a character and finally a zero (0x00 or NULL). The three control bytes are the volume, pitch and speed values for the text. For every byte sent, there will be an acknowledge byte sent back from the module. It is essential that you wait for the acknowledge byte before sending the next character. Here is the sequence to speak the word "Hello" at full volume and moderate pitch and speed. Note that the volume value 0-7 is from loudest to quietest. The PIC's text buffer is 85 bytes in size, so that is the limit for a single phrase. The volume, pitch, speed and trailing NULL character take 4 bytes leaving 81 for the text.

Command byte Transmitted to SP03 Module	Acknowledge byte returned from SP03
Command 0x80	0x01
Full Volume 0x00	0x00
Speech Pitch 0x04	0x04
Speech Speed 0x02	0x02
Text 'H'	'H'
Text 'e'	'e'
Text 'l'	'l'
Text 'l'	'l'
Text 'o'	'o'
NULL 0x00	0x00
SP03 will now speak the text	0x00 indicates text loading is complete

Command 129 (0x81)

This command is used to read back the WTS701's status register. After sending 0x81 to the module it will respond by sending back first the low byte and then the high byte of the WTS701 status register. This may be used to determine when the WTS701 has actually finished speaking the text. You should consult the WTS701 data sheet for full details of the status bits, however a simple way to do this in C is;

```
do {  
    SerOut(0x81);           // send Get Status command  
    sts = SerIn();          // get low byte  
    sts += SerIn()<<8;     // get high byte  
    sts &= 0x8003;         // select bits to test  
}while(sts != 0x8001);    // and loop until finished speaking
```

Command 130 (0x82)

This command is used by SP03.EXE to download the 30 predefined phrases into the PIC's Flash memory. Do not try to use it as the protocol requires that the text is sent in a compressed format. Use the configuration utility SP03.EXE instead.

All other values sent as commands will be ignored and no acknowledgement will be returned.

I2C Bus Communications

Along with the 5Volt power supply, the I2C bus just requires the SDA and SCL lines. The I2C interface does not have any pull-up resistors on the board, these should be provided elsewhere, most probably with the bus master. They are required on both the SCL and SDA lines, but only once for the whole bus, not on each module. I suggest a values of 4k7 for 100KHz and 1k8 if you are going to be working up to 400KHz or higher. If your going for higher speeds than 400KHz then you must separate **all** bytes transmitted over the I2C bus to the SP03 with a 40uS delay. This is to give the processor time to transfer the incoming data to the buffer. By doing this we have tested the SP03 with SCL up to 1MHz.

I2C communication protocol with the speech module is the same as popular eeprom's such as the 24C04. The SP03 only has two registers, the command register and the software revision number. To read the software revision number, first send a start bit, the module address (0XC4) with the read/write bit low, then the register number you wish to read (0x01). This is followed by a repeated start and the module address again with the read/write bit high (0XC5). You now read one byte which is the PIC software revision number and follow this with the stop bit.

Register	Function
0	Command Register
1	Software Revision Number

All commands and text to be spoken are sent to the command register. There are 32 valid commands, listed below:

Command	Action
NOP (0x00)	No Action
SPKPRE 1 to 30, or 0x01 to 0x1E)	Speak pre-defined phrase
SPKBUF 64 or 0x40	Speak text previously stored in buffer

The NOP command is followed by the text that you want spoken. You may send as little or as much (up to the 85 byte limit) as you wish. A number of NOP sequences may be used to build up the buffer before the SPKBUF command is issued. The buffer is flushed after a SPKPRE or SPKBUF command is used. A text sequence is the same as for the RS232 protocol, that is, 3 control bytes, then the ASCII text, and finally a zero (0x00 or NULL). The text in the buffer may then be spoken by sending a SPKBUF command. The PIC's text buffer is 85 bytes in size, so that is the limit for a single phrase. The volume, pitch, speed and trailing NULL characters take 4 bytes leaving 81 for the text.

To say "Hello" send the following sequence over the I2C bus:

Start Bit	I2C Start Sequence
0xC4	SP03 I2C Address
0x00	SP03 Command Register
0x00	SP03 NOP Command
0x00	Volume (Max.)
0x05	Speech Speed
0x03	Speech Pitch
'H' (0x48)	Text
'e' (0x65)	Text
'l' (0x6C)	Text
'l' (0x6C)	Text
'o' (0x6F)	Text
0x00	NULL
Stop Bit	I2C Stop Sequence

Note - there is no command to "speak the following text", as the RS232 interface does. If you wish to speak a single phrase then you should send a NOP command followed by the text sequence. Then, in a separate I2C bus transaction, the SPKBUF command on its own.

To check to see when the SP03 has finished speaking, you can read back the command register. Whilst speaking, it will be the command that initiated the speaking, either 1-30 (0x01-0x1E) or 64 (0x40). It will be cleared to zero (0x00) when speaking is complete and the module is ready for the next phrase.

See the [examples page](#) for examples of using the I2C bus interface with popular controllers.

Parallel Port Communications

PL2 is used to speak one of the 30 pre-defined phrases. Text cannot be sent to the parallel port for speaking. To speak any of the 30 (1-30) pre-defined phrases, apply the phrase number to the 5 bit input port SEL4 - SEL0. The numbers 0 and 31 (0x00 and 0x1F) are just parking values and do not cause any phrase to be spoken. The SP03 has pull-up resistors on the inputs so they can be left unconnected if not used. As soon as the CPU has recognised and confirmed the new input (a few uS at most) it will raise the STATUS bit to a logic 1 (high) and speak the phrase. As soon as the STATUS bit goes high, the input code may be removed by returning the input to 0x00 or 0x1F. This must happen before the unit has finished speaking or the phrase will be repeated. The STATUS bit will go to a logic 0 (low) when the SP03 has finished speaking, and this can be monitored by the host.

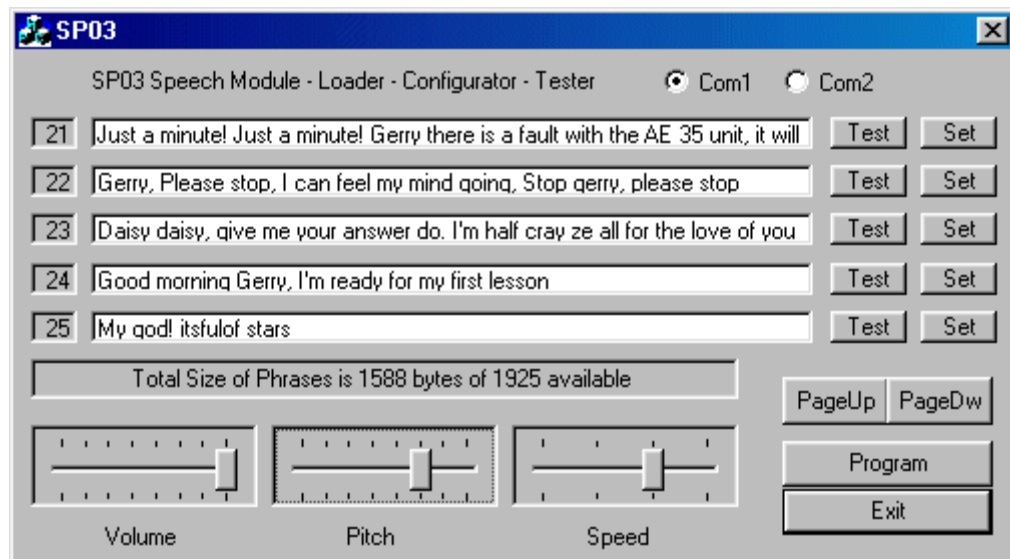
See the [example page](#) for examples of using the parallel port with popular controllers.

Power Up

On power up, the module will speak phrase #1, if one has been stored by the configuration program SP03.EXE

Configuration program SP03.EXE

The SP03 configuration program is shown below and can be downloaded from [here](#). It is a PC program only, we are not able to support other platforms.



When you run the program for the first time, you should select the communications port you will be using, either COM1 or COM2. This will be remembered for the next time you run the program.

The SP03 configuration program can store 30 phrases in 6 pages of 5 phrases each. Press the PageUp and PageDw buttons to change pages. Below the 5 edit boxes for the phrases is a message/status bar and 3 sliders for volume, pitch and speed. The volume and Speed sliders work as expected but the pitch is a little strange, try the seventh position! The pitch seems out of sequence with the rest of the positions, but that's the WTS701. Below the PageUp and PageDw buttons is the program button. This will program all 30 phrases into the Flash memory of the PIC16F872 processor on the SP03.

SP03.EXE Operation

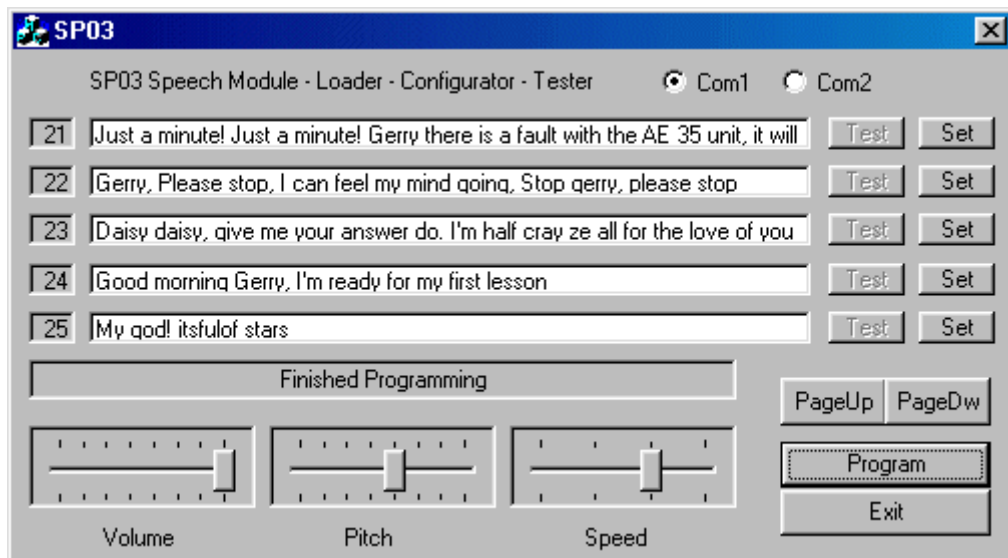
The operation of the program is fairly easy. Start by selecting the Com port and setting the Volume, Pitch & Speed sliders as shown above. Now type something into one of the edit boxes and press the "Test" button to the right of that edit box. The words you typed will be spoken. Notice that the message bar keeps track of the number of characters used so far. This is the total for all 30 phrases.

The "Test" and "Set" buttons

Both of these buttons cause the phrase to be spoken. The "Test" button uses and also stores the Volume, Pitch & Speed values set on the sliders. The "Set" button uses the Volume, Pitch & Speed values stored from the previous use of the "Test" button. Therefore you can have different Volume, Pitch & Speed settings for each of the 30 phrases. When you've all your phrases set-up and tested using the "Set" buttons you're ready to program them into the PIC16F872.

Programming the Phrases

Easy! Just press the "Program" button. Your phrases will be compressed and stored in the Flash memory of the PIC16F872 processor. The message bar will report the progress of programming. When programming is complete you will see the following screen:

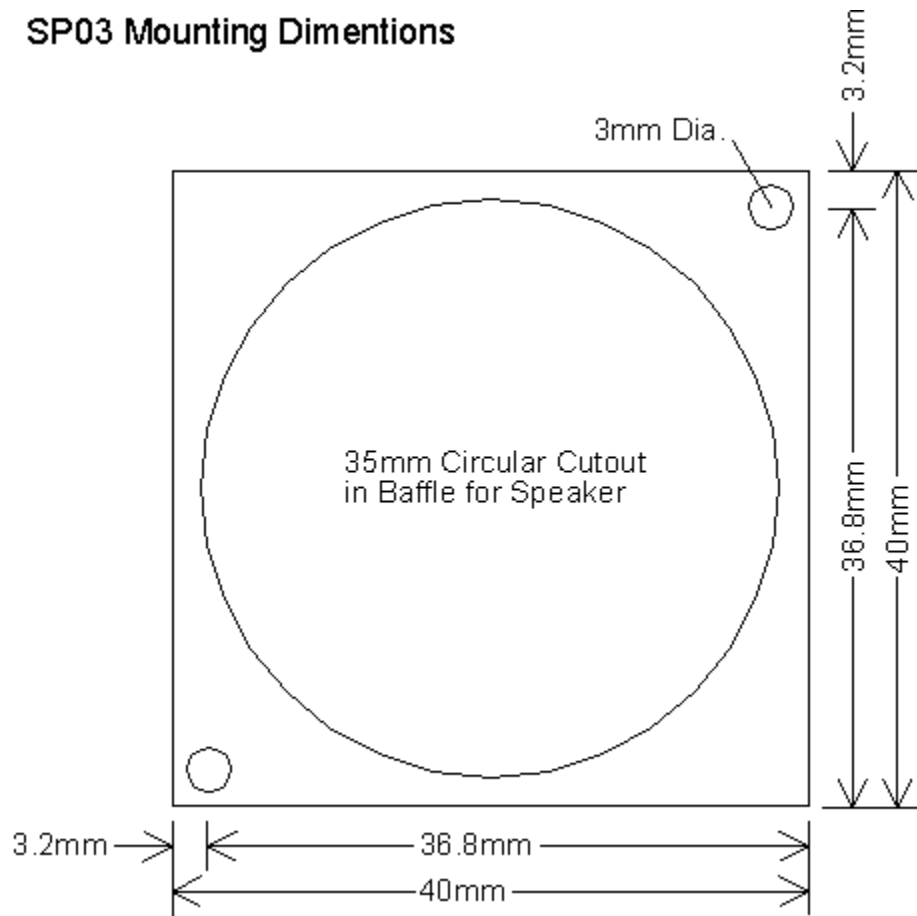


Notice that the "Test" buttons are de-selected. The remaining "Set" buttons have now changed mode and when pressed will cause the phrase to be spoken directly from the pre-defined phrases that you just programmed. Click in any of the edit boxes to restore the "Test" and "Set" buttons to normal.

Notice that the "Test" buttons are de-selected. The remaining "Set" buttons have now changed mode and when pressed will cause the phrase to be spoken directly from the pre-defined phrases that you just programmed. Click in any of the edit boxes to restore the "Test" and "Set" buttons to normal.

Baffle Cutout and Dimensions

Baffle Cutout and Dimensions SP03 Mounting Dimensions



Hersteller: Robot Electronics Devatech – England

Bezug: www.Robotikhardware.de (Deutschland)